



Hollow cone
nozzle

ATR 60°



European Color
code

SPECIFIC CHARACTERISTICS

- › Easy dismantling for cleaning.
- › The angle of 60 degrees :
 - Is mostly recommended during the use of the Shielded Sprayer or Tunnel sprayer.
- › Can be used on a sprayer boom starting at 40 psi.
- › Precision polished ceramic surfaces of internal components ensure perfect sealing of the swirl chamber to give precise flowrate.
- › **Recommended pressure for airblast sprayers: 150 - 250 psi.**
- › Information about droplet size (see page 5)

MAIN CHARACTERISTICS

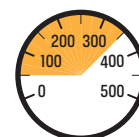
- › Angle of 60 degree at 70 psi.
- › Hollow cone nozzle producing fine droplets.
- › The **green insert** is used to specify that the nozzles has an angle of 60 degree.
- › ALBUZ® durable pink ceramic allows high pressure spraying while maintaining nozzle performance and precision.

FLOW RATE CHART [gpm/min]

Pressure (psi)	LILAC	BROWN	YELLOW	ORANGE	RED	GREY	GREEN	BLACK	BLUE
40	0.073	0.097	0.147	0.2	0.28	0.304	0.361	0.405	0.496
50	0.081	0.108	0.164	0.223	0.311	0.338	0.401	0.450	0.552
60	0.088	0.118	0.179	0.243	0.339	0.368	0.437	0.491	0.601
70	0.095	0.127	0.193	0.262	0.365	0.396	0.470	0.528	0.647
80	0.101	0.135	0.206	0.280	0.389	0.422	0.500	0.562	0.689
90	0.107	0.143	0.218	0.296	0.411	0.446	0.529	0.595	0.729
100	0.113	0.151	0.230	0.311	0.433	0.468	0.556	0.625	0.766
110	0.118	0.158	0.241	0.326	0.453	0.490	0.581	0.654	0.801
120	0.123	0.164	0.251	0.340	0.472	0.510	0.606	0.681	0.835
130	0.128	0.171	0.261	0.354	0.490	0.530	0.629	0.708	0.867
140	0.132	0.177	0.271	0.367	0.508	0.549	0.651	0.733	0.898
150	0.137	0.183	0.280	0.379	0.525	0.567	0.673	0.757	0.928
160	0.141	0.189	0.289	0.391	0.541	0.584	0.694	0.781	0.957
170	0.145	0.194	0.298	0.403	0.557	0.601	0.714	0.804	0.985
180	0.149	0.200	0.307	0.414	0.572	0.617	0.733	0.826	1.012
200	0.157	0.210	0.323	0.436	0.602	0.649	0.770	0.868	1.064
220	0.164	0.220	0.338	0.457	0.629	0.678	0.806	0.908	1.113
240	0.171	0.229	0.353	0.476	0.656	0.707	0.839	0.946	1.160
260	0.177	0.238	0.367	0.495	0.682	0.734	0.872	0.983	1.205
280	0.184	0.247	0.381	0.513	0.706	0.760	0.902	1.018	1.248
300	0.190	0.255	0.394	0.531	0.730	0.785	0.932	1.051	1.289
320	0.196	0.263	0.407	0.547	0.752	0.809	0.961	1.084	1.329
340	0.201	0.271	0.419	0.564	0.774	0.833	0.989	1.116	1.368

APPLICATIONS

For fungicides and insecticides. Recommended for orchard and vineyards.



40-340 psi



60°

